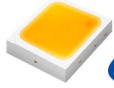




FL20

Solar Shelter Light System

Complete Systems With 3 Or More LED Fittings



SAMSUNG

Samsung® LED Technology
Up to 140 lm/W efficiency.



- Supplied as a complete, professional, commercial grade, self-contained, stand-alone lighting system.
- This system is ideal for illuminating shelters of all kinds including canopies, covered walkways, bus shelters, gazebos, storage containers, recreational buildings, sheds, cabins, barns, bin stores, smoking shelters, tunnels, hoardings and outbuildings, etc.
- Perfect for interior or exterior locations, buildings or structures where there is no mains power.
- The nightly illumination time is automatic and can be preprogrammed as required (dusk to dawn all year round, single timed mode, dual timed mode, etc.).
- Choice of LED power 5W (450 lumens) or 10W (900 lumens) and LED colour temperature options (warm white (3,000k) or daylight white (5,000k)). Other LED power options and CCT available by special order.
- Choice of three or more 60cm, 90cm or 120cm light fittings on one system.
- One or more PIR motion sensors and dimming features are available as an option.
- The solar panel size (wattage) and battery size (capacity) are calculated based on the total LED power (wattage), the geographic location of the installation site, and the total nightly hours of illumination.



*SUBJECT TO OUR TERMS & CONDITIONS, AND RETURNS POLICY

Free Delivery* ✓
UK and Europe

Lowest Price* ✓
Guarantee

Lifetime* ✓
Tech Support

5 Year* ✓
Product Warranty

20 Year* ✓
Panel Warranty

11-12 Old Bond Street • Mayfair • London • W1S 4PN • Great Britain • Phone: 020 7873 2262

MONDAY - FRIDAY 9:00AM - 9:00PM (UK TIME)

www.solarilluminations.co.uk • sales@solarilluminations.co.uk



FL20

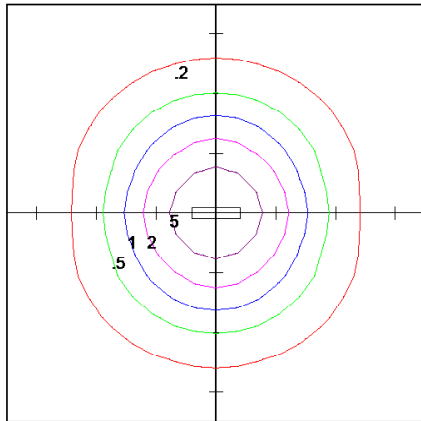
Solar Shelter Light System

Complete Systems With 3 Or More LED Fittings

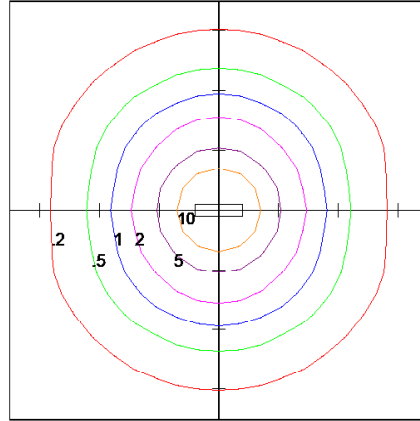


Light Fitting

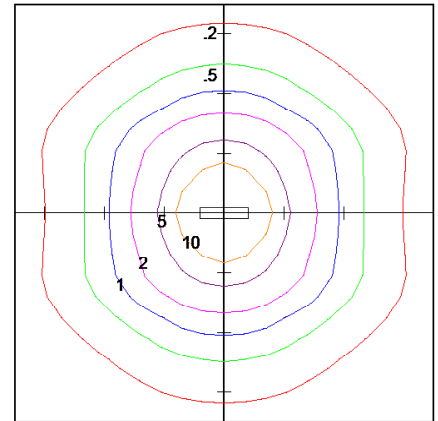
- Weatherproof IP65 rated.
- For interior or exterior use. Wall or ceiling mounted.
- Polycarbonate construction with stainless steel hardware.
- Configured with one or multiple Samsung® LED strips.
- Light output is from 690 to over 2,500 lumens per light fitting.
- Offered with a choice of LED power from 5W to 20W, or more.
- LEDs are powered with a MeanWell® driver and include optional PWM dimming control.
- All LEDs are white at approx. 5500 to 6000k colour temperature. Warm white, cool white colour temperatures are available by special order only and at extra cost.
- LED life is typically up to 100,000 hours or equal to about 22 years.
- These enclosures meet IEC Standards, and are IP66 rated.
- Offered as a 66cm long or 120cm long vaporproof enclosure.
- 60cm light fitting dimensions are approx. 60cm x 10cm x 9cm LxWxD.
- 120cm light fitting dimensions are approx. 120cm x 10cm x 9cm LxWxD.
- Each light fitting has approx. 4m of pre-wired cable.
- The light fitting may be directly screwed onto a solid surface or mounted using the supplied mounting clips.



SOLAR ILLUMINATIONS
2' 10W VAPOR LIGHT WITH CLEAR LENS.
Horizontal Footcandles
Scale: 1 Inch = 10 FT.
Light Loss Factor = 1.00
Lumens Per Lamp = 1360
Total Lamp Lumens = 1360
Mounting Height = 10.00 FT



SOLAR ILLUMINATIONS
2' 20W VAPOR LIGHT WITH CLEAR LENS.
Horizontal Footcandles
Scale: 1 Inch = 10 FT.
Light Loss Factor = 1.00
Lumens Per Lamp = 2460
Total Lamp Lumens = 2460
Mounting Height = 10.00 FT



SOLAR ILLUMINATIONS
4' 20W VAPOR LIGHT WITH CLEAR LENS.
Horizontal Footcandles
Scale: 1 Inch = 10 FT.
Light Loss Factor = 1.00
Lumens Per Lamp = 2460
Total Lamp Lumens = 2460
Mounting Height = 10.00 FT



Samsung® LED Technology
Up to 140 lm/W efficiency.



IP65, Vaporproof, UL Listed
& Vandal Resistant Enclosure



Free Delivery*
UK and Europe

Lowest Price*
Guarantee

Lifetime*
Tech Support

5 Year*
Product Warranty

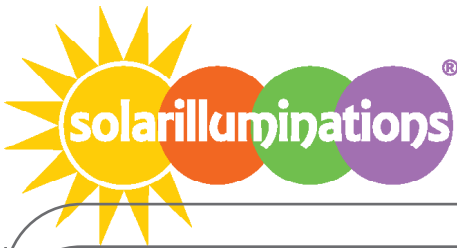
20 Year*
Panel Warranty

11-12 Old Bond Street • Mayfair • London • W1S 4PN • Great Britain • Phone: 020 7873 2262

MONDAY - FRIDAY 9:00AM - 9:00PM (UK TIME)

www.solarilluminations.co.uk • sales@solarilluminations.co.uk

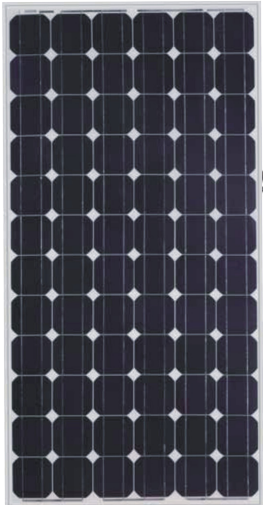
*SUBJECT TO OUR TERMS & CONDITIONS, AND RETURNS POLICY



FL20

Solar Shelter Light System

Complete Systems With 3 Or More LED Fittings



20
YEAR
GUARANTEE

Solar Panel

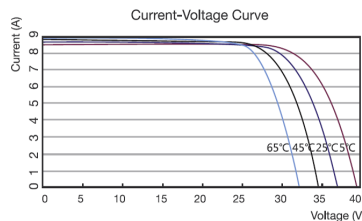
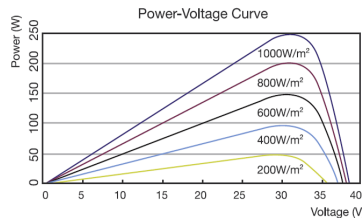
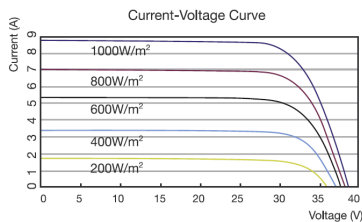
Systems are supplied with high quality monocrystalline or polycrystalline solar panels with the highest performance and efficiency. They are designed to endure the harshest environments, and are guaranteed to provide power for well over 20 years. Typically manufactured in the USA, Canada, or Germany. The solar panel power is subject to LED consumption, installation location, and illumination period. Please consult with our engineers for specific solar power recommendations.

MC4 Connector



Photovoltaic Module

- Highly efficient monocrystalline or polycrystalline solar panel with aluminium frame, anti-aging, and encapsulated membrane.
- Anti-reflective and anti-soiling surface that reduces power losses from dirt and dust.
- Certified to withstand high wind loads (340PSI) and snow loads (780PSI); and resistance to high salt and ammonia.
- Manufactured to international standards, verified and certified by independent testing laboratories. (UL, ETL, IEC, MCS, & TUV)
- Assembled to strict quality control standards; international standards ISO 9001 and ISO 14001.
- Range of solar panel power available from 45W to +500W.
- The solar panel power is subject to LED consumption, installation location, and illumination period. Please consult our engineers for specific solar power requirements.
- Solar panels can be supplied in a single or dual format (2 x 70W = 140W, 2 x 100W = 200W etc.)
- Typical solar panel life is over 30 years, subject to environmental factors.



Free Delivery*
UK and Europe

Lowest Price*
Guarantee

Lifetime*
Tech Support

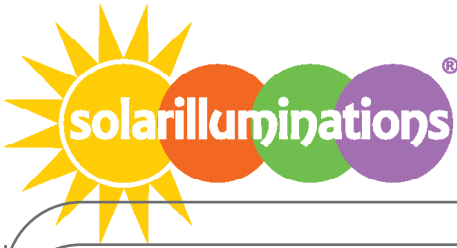
5 Year*
Product Warranty

20 Year*
Panel Warranty

11-12 Old Bond Street • Mayfair • London • W1S 4PN • Great Britain • Phone: 020 7873 2262
MONDAY - FRIDAY 9:00AM - 9:00PM (UK TIME)

www.solarilluminations.co.uk • sales@solarilluminations.co.uk

*SUBJECT TO OUR TERMS & CONDITIONS, AND RETURNS POLICY



FL20

Solar Shelter Light System

Complete Systems With 3 Or More LED Fittings

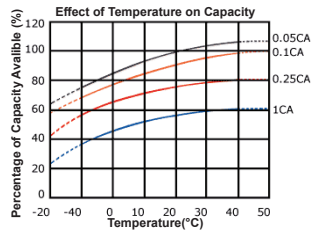


“We supply batteries that are engineered and tested to provide reliable, long-lasting power for Photovoltaic (PV) and renewable energy applications where frequent deep cycles are required and minimum maintenance is



Battery

- Two 12 Volt VRLA deep cycle batteries are required.
- GEL or AGM batteries are available as an option.
- Battery capacity ranges from 30 AH up to 250 AH (at 20 HR Rate) subject to model selected and customer operation requirements.
- Typical maximum daily DOD designed around 30%.
- Non-spillable (defined by DOT, ICAO and IATA), valve regulated, NonHAZMAT.
- Conforms to ISO9001, ISO/TS 16949, and ISO14001 standards.
- Typical battery life is approximately 3 to 5 years, subject to environmental factors.



VRLA Technology

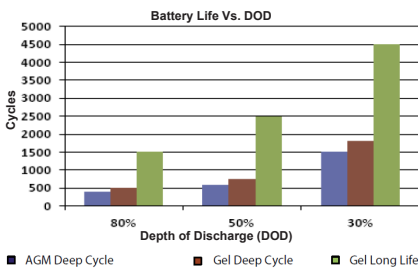
VRLA batteries are maintenance free for life. VRLA stands for Valve Regulated Lead Acid, which means the batteries are sealed. Gas will only escape through the safety valves in the case of overcharging or cell failure.

AGM and Gel batteries have exceptional discharge recovery, even after deep or prolonged discharge. However, it should be noted that repetitive deep discharge and prolonged deep discharge have a negative influence on the service life of all lead acid batteries.

Gel batteries in general have a longer service life and better cycle capacity than AGM batteries.

Please Note: The rated capacity of our AGM or gel deep cycle batteries refer to 20 hour discharge rate (i.e. 0.05CA). Most products actually operate near, or at a 100 hour discharge rate (i.e. 0.01CA) and thus actual available battery capacity is slightly higher than the advertised rate.

The total available battery power is measured in watt-hour (Wh) or V*Ah. When comparing our total battery capacity with competitor's, please note that the battery capacity from a 12V system is not interchangeable with the battery capacity of a 24V system. However, the total battery power (i.e. watt-hours) is always comparable provided the correct system voltage is considered during calculation.



Free Delivery*
UK and Europe

Lowest Price*
Guarantee

Lifetime*
Tech Support

5 Year*
Product Warranty

20 Year*
Panel Warranty

11-12 Old Bond Street • Mayfair • London • W1S 4PN • Great Britain • Phone: 020 7873 2262

MONDAY - FRIDAY 9:00AM - 9:00PM (UK TIME)

www.solarilluminations.co.uk • sales@solarilluminations.co.uk

*SUBJECT TO OUR TERMS & CONDITIONS, AND RETURNS POLICY



FL20

Solar Shelter Light System

Complete Systems With 3 Or More LED Fittings

Performance

Operating voltage is 24 Volts. DC.
Power consumption is 5 or 10 Watts (subject to selection).
Operating temperature -40 deg. C ~ +80 deg. C (-40 deg. F ~ 175 deg. F).
Intelligent battery management software to prevent over-charging and over-discharging.
Includes a minimum of three to five days of autonomy (battery back-up).
Several successive cloudy or alternating overcast days typically will not affect illumination time.
Supplied solar panel power is based on installation location and system requirements.
Illumination period can be designed to meet specific requirements.



NEMA
3R

Hardware & Pole

Battery Enclosure

- Galvanized steel lockable battery enclosure will accommodate the rechargeable batteries and charge controller (padlock not included.)
- Designed to conform to NEMA 3R and IP22 rating standards for Outdoor Enclosures. Offering protection against rain, snow, and sleet. Meets the requirements of UL 508 "Rainproof enclosures".
- The battery enclosure can be mounted on to the structure or to a pole with optional pole mount hardware, depending installation preference and battery capacity.
- The battery box has pre-drilled holes to enable secure installation to a horizontal or vertical surface.
- Battery Enclosures: galvanized/painted steel (Standard); aluminum (Special Order), or stainless steel (Special Order).



Hardware

- Standard triangular solar panel mounting hardware (surface mount) is supplied, typically one pair per panel.
- Optional pole top mount solar panel hardware, limited to certain PV configurations.
- Optional pole side mount solar panel hardware, limited to certain PV configurations.
- Optional roof top mount or rail mount solar panel hardware available by special order.
- Power cables, solar panel cables, and battery connections are included.
- This system supports real time data monitoring, 30 day performance history, and user programmability from Apple or Android smartphones, tablets, etc. Use of this feature requires the optional MPPT Bluetooth Dongle.



*SUBJECT TO OUR TERMS & CONDITIONS, AND RETURNS POLICY

Free Delivery*
UK and Europe

Lowest Price*
Guarantee

Lifetime*
Tech Support

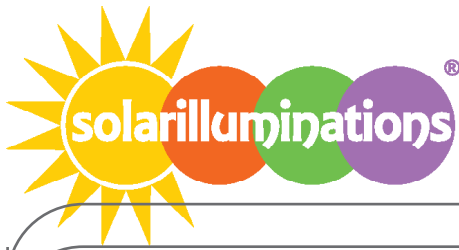
5 Year*
Product Warranty

20 Year*
Panel Warranty

11-12 Old Bond Street • Mayfair • London • W1S 4PN • Great Britain • Phone: 020 7873 2262

MONDAY - FRIDAY 9:00AM - 9:00PM (UK TIME)

www.solarilluminations.co.uk • sales@solarilluminations.co.uk



FL20

Solar Shelter Light System

Complete Systems With 3 Or More LED Fittings

Installation

You do not necessarily need to be an expert in solar or electricity to successfully install one of our systems. Our products are designed to be simple and easy to install, supplied with quick connections and common mounting hardware.



The solar panel can mount directly to the roof or to a separate pole using our supplied triangular hardware or other available hardware. The light fixtures can directly screw or bolt onto a solid surface, secured using the supplied mounting clips for a quick snap fit connection, or they hang from the ceiling. The battery enclosure is designed to mount to a horizontal/vertical surface using bolts or can strap to a pole using heavy duty stainless steel banding. The MPPT charge controller will be pre-configured and programmed to meet your requirements.

*SUBJECT TO OUR TERMS & CONDITIONS, AND RETURNS POLICY

Free Delivery*
UK and Europe ✓

Lowest Price*
Guarantee ✓

Lifetime*
Tech Support ✓

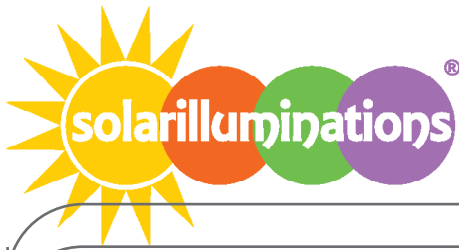
5 Year*
Product Warranty ✓

20 Year*
Panel Warranty ✓

11-12 Old Bond Street • Mayfair • London • W1S 4PN • Great Britain • Phone: 020 7873 2262

MONDAY - FRIDAY 9:00AM - 9:00PM (UK TIME)

www.solarilluminations.co.uk • sales@solarilluminations.co.uk

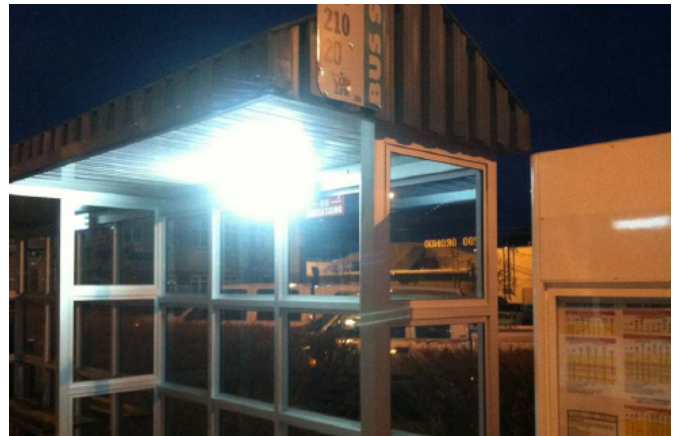


FL20

Solar Shelter Light System

Complete Systems With 3 Or More LED Fittings

Typical Use - Examples



Free Delivery*
UK and Europe ✓

Lowest Price*
Guarantee ✓

Lifetime*
Tech Support ✓

5 Year*
Product Warranty ✓

20 Year*
Panel Warranty ✓

11-12 Old Bond Street • Mayfair • London • W1S 4PN • Great Britain • Phone: 020 7873 2262

MONDAY - FRIDAY 9:00AM - 9:00PM (UK TIME)

www.solarilluminations.co.uk • sales@solarilluminations.co.uk

*SUBJECT TO OUR TERMS & CONDITIONS, AND RETURNS POLICY